



# NBX-1000 series

# OPTICAL SWITCH for NEUBREScope

## FEATURES

- 1x8, 1x16 or 2x8 Optical Channels
- 2x16 available by 2 units of 1x16
- FC/APC or E2000/APC connector available
- Power supplied by USB
- Easy operating with NEUBREScope™ GUI.



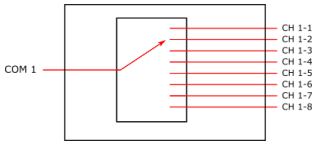
Model: NBX-1000-2

The NBX-1000 MEMS optical switch is designed for multiple fiber measurement. There are three model available for 1x8, 1x16 or 2x8 configurations.

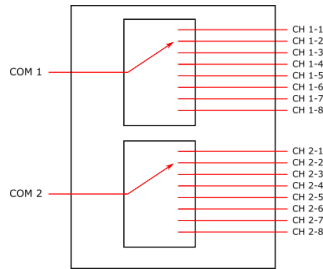
The balanced switching insertion loss for overall channels gives a good optical budget stability for the measurement system. Thus when switching over the different channels; still the results won't be deviated from the reference one.

The setting is easily operated on NEUBREScope GUI, and the USB interface gives no extra power supplier needed.

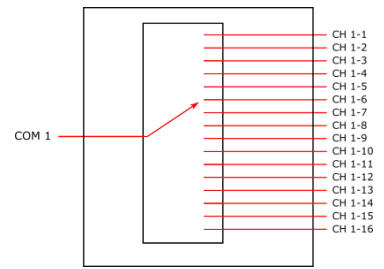
The NBX-1000 power consumption is as low as 1.5VA thus the NBX-1000 can be set together with any optical measurement instruments.



NBX-1000-1 Channels Diagram



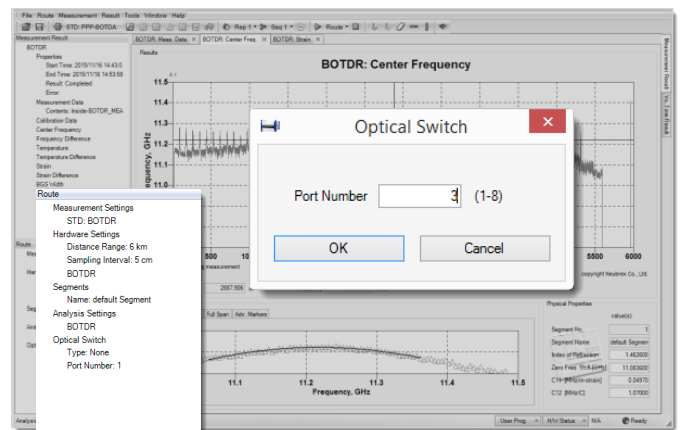
NBX-1000-2 Channels Diagram



NBX-1000-3 Channels Diagram

## Specifications NBX-1000 series

Model	1x8 (NBX-1000-1), 2x8 (NBX-1000-2) 1x16 (NBX-1000-3), 2x16 (NBX-1000-4)
Testing Wavelength	1500 to 1565 nm
Insertion Loss	< 1.5 dB
Cross Talk	< 60 dB
Return Loss	< 45 dB
Polarization Dependent Loss	< 0.15 dB
Switching Speed	0.5 sec
Switching Control I/F	NEUBREScope GUI (USB 2.0)
Optical Fiber Type	Single Mode Optical Fiber
Connector Type	FC/APC (default) E2000/APC (factory option)
Power Supply	USB 2.0
Dimension (W x H x D)	440 x 73 x 442 mm 17.32 x 2.87 x 17.40 in
Weight	Approx. 5kg / 11 lbs
Operation Temperature	5 to 40 C / 41 to 104 F
Storage Temperature	-10 to 50 C / 41 to 104 F



NEUBREScope™ and NBX-1000 setting dialog

## Neubrex Co., Ltd.

Sakaemachi-dori 1-1-24, Chuo-ku, Kobe, Hyogo 650-0023, Japan  
Tel: +81-78-335-3510

www.neubrex.com

